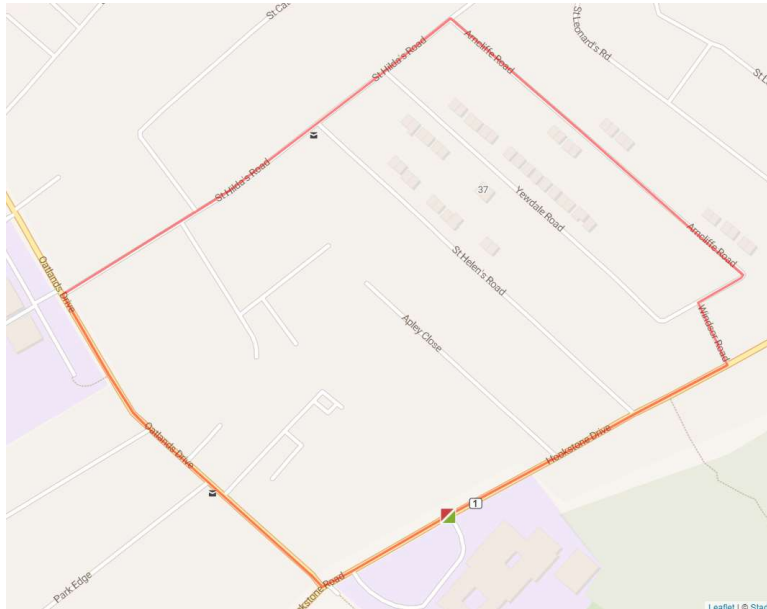


# SJF – WINTER ROUTE 1 – 1 MILE

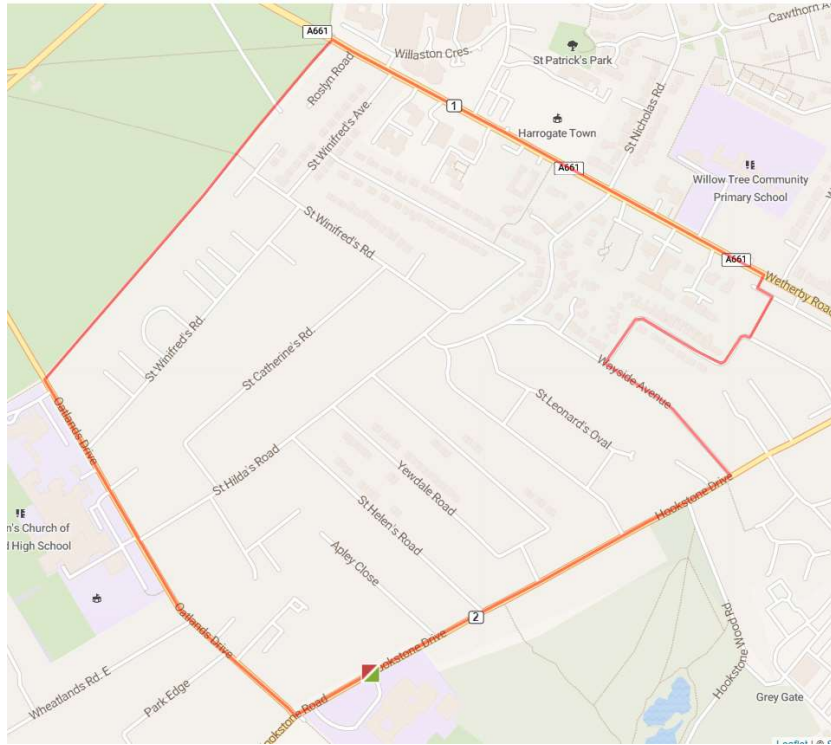
[https://gb.mapometer.com/running/route\\_5471228.html](https://gb.mapometer.com/running/route_5471228.html)



L out of school grounds (use path) – cross Hookstone Dr at crossing (2nd set lights) – R onto Oatlands Dr (side roads!) – R onto St Hilda's Rd (side roads!) – R onto Arncliffe Rd – L onto Windsor Rd – R onto Hookstone Dr (side roads!) – cross at crossing and back to base.

# SJF – WINTER ROUTE 1 – 2 MILE

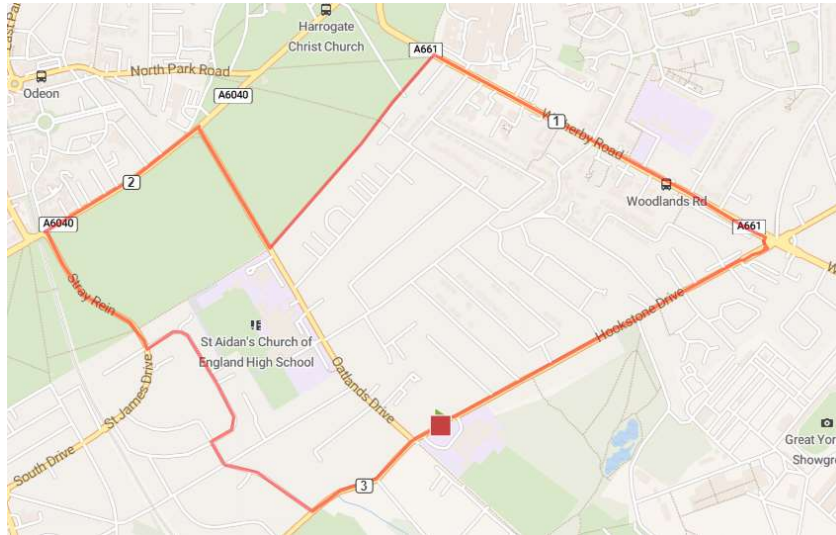
[https://gb.mapometer.com/running/route\\_5471217.html](https://gb.mapometer.com/running/route_5471217.html)



L out of school grounds (**use path**) – cross Hookstone Dr at crossing (**2nd set lights**) – R onto Oatlands Dr (**side roads!**) – R onto Slingsby Walk – R onto Wetherby Rd (**side roads!**) – after passing Cedar Grove, take R onto footpath – then R onto footpath between houses – R onto Wayside Walk – L onto Wayside Ave – R onto Hookstone Dr (**side roads!**) – cross at crossing and back to base.

# SJF – WINTER ROUTE 1 – 3 MILE

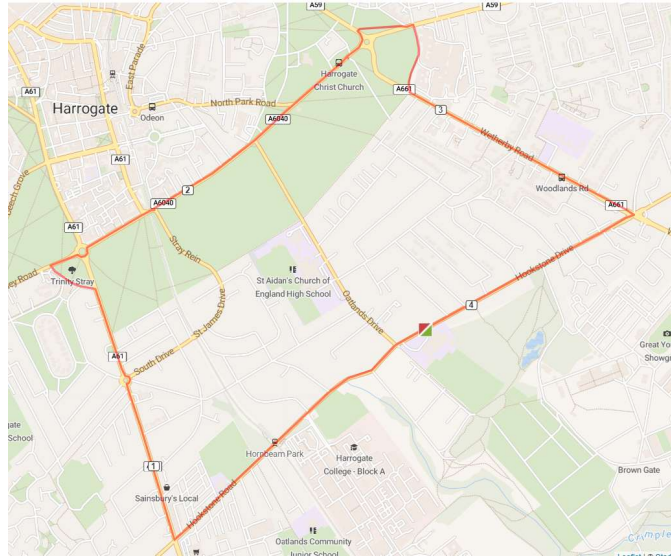
[https://gb.mapometer.com/running/route\\_5471218.html](https://gb.mapometer.com/running/route_5471218.html)



L out of school grounds (**use path**) – cross Hookstone Dr at crossing (**2nd set lights**) – R up Hookstone Dr (**side roads!**) – L onto Wetherby Rd (**side roads!**) – L onto Slingsby Walk – R onto Oatlands Dr – cross when safe to do so (**slippy grass!**) – cross York Place at crossing – L along York Place (**side roads!**) to Station Parade – cross York Place at crossing to run down Stray Rein – L onto Cavendish Ave – L onto Belgrave Cres and then over to Hornbeam Cres – L onto Hookstone Rd onto Hookstone Dr (**side roads!**) – cross at crossing and back to base.

# SJF – WINTER ROUTE 1 – 4 MILE

[https://gb.mapometer.com/running/route\\_5471227.html](https://gb.mapometer.com/running/route_5471227.html)



L out of school grounds (**use path**) – cross Hookstone Dr at crossing (**2nd set lights**) – cross Oatlands Dr onto Hookstone Rd (**side roads!**) – R onto Leeds Rd (**side roads!**) – over roundabout then cross onto opposite footpath – bear R along Leeds Rd – L onto Trinity Rd – R onto Otley Rd – use islands to cross over to York Place footpath (**side roads!**) – use islands to cross over to path between Skipton Rd and Knaresborough Rd – cross onto Slingsby Walk – L onto Wetherby Rd and cross at crossing – R onto Hookstone Dr (**side roads!**) – cross at crossing and back to base.